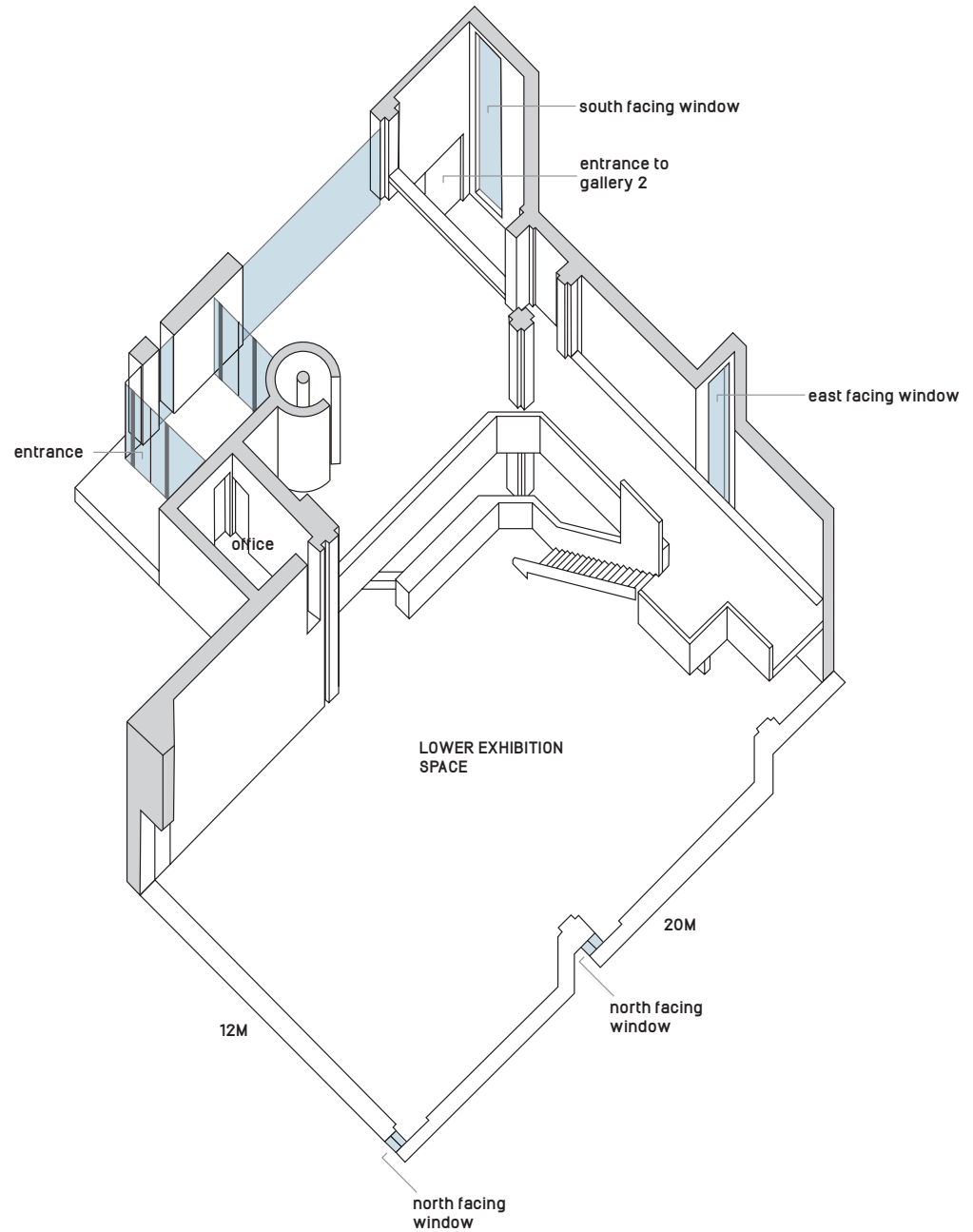


The Douglas Hyde Gallery

description of the galleries

The Douglas Hyde Gallery, opened on 28th March 1978, was designed by Paul Koralek of ABK Architects. The poured concrete of the gallery structure is a prime example of 1970's architecture, and forms part of Trinity College's Arts block.





Tai R
'House of Prince'
exhibition installation
2005



In the main space, the North wall has a running length of 10.67m, and a height of 5.28m. The west wall has a total running length of 14.81m, but is broken by two angled wall sections, leaving two straight areas of 5.98 and 5.91m, and a height of 5.28m. The two angled sections each have a running length of 1.45m. The East wall has a running length of 7.23m, and a height of 5.28m.

Michael Craig-Martin
'Landscapes'
exhibition installation
2001



Keith Edmier
mixed media
exhibition installation
1998

gallery 2

Gallery Two, designed by Mc Cullough Mulvin Architects, was opened on June 8th, 2001. This smaller space, which has won architectural awards, measures 2.7m high by 6.7m wide by 3.5m long. Despite its modest scale, Gallery Two has, since its opening, played a significant role in the Gallery's programme, housing exhibitions by major contemporary artists. The space does not receive any daylight, although it has a very flexible lighting system.

Gallery two features an architectural doorway which is broken into a number of sections – these can be opened in a variety of combinations, from a half door which forces the viewer to stoop in order to enter the space, to its completely open configuration. The space offers an intimate, contemplative environment for the display of artworks, and has been successfully exploited as an exhibition space for sculpture, painting, video and photography.

Gallery 2
Marlene Dumas
installation view
photograph/courtesy
Christian Richters

